



Approximately 1,900 sq. ft. — Two Story

## THE WELLS

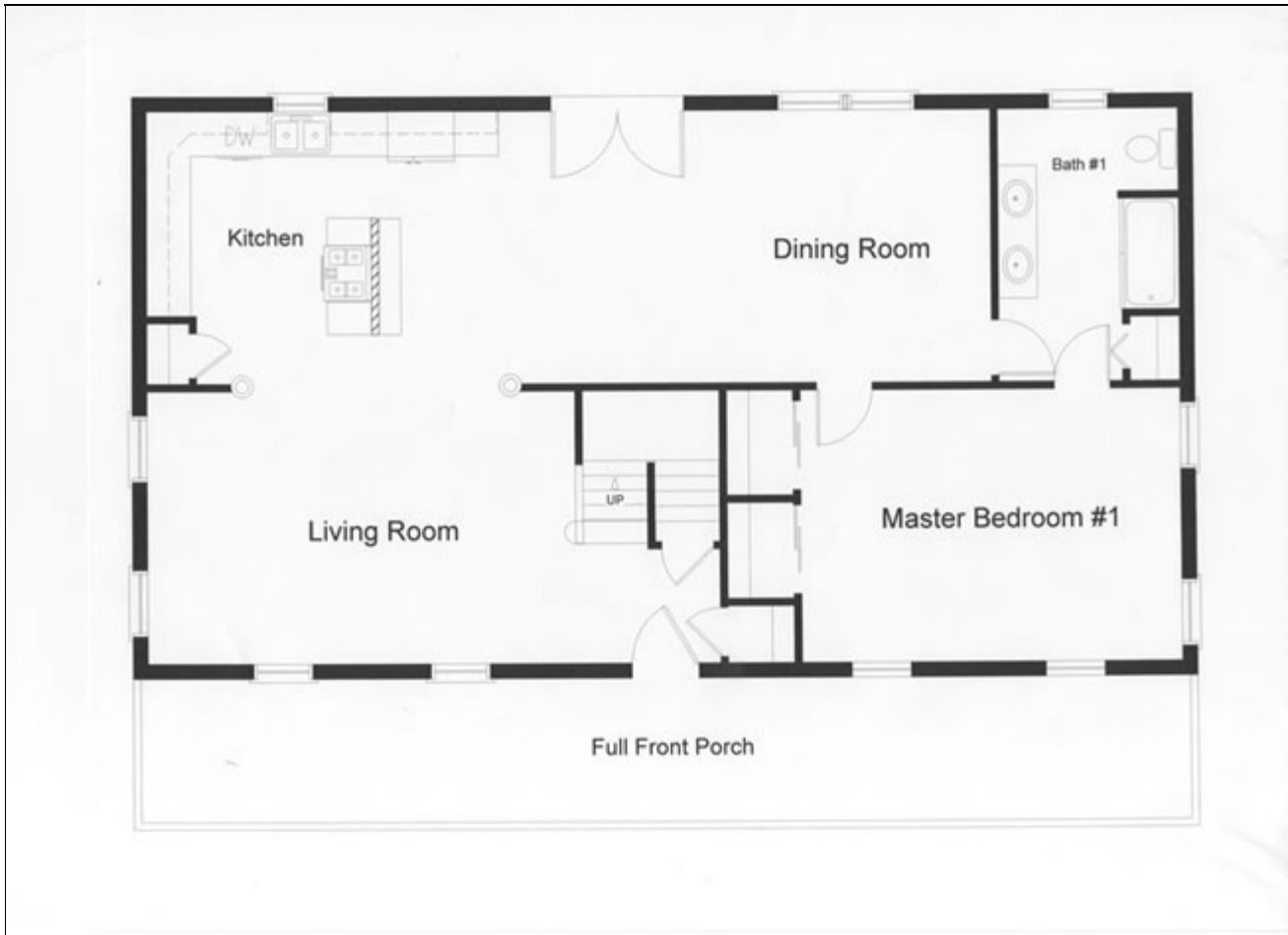
<u>LIVING AREA (SQ FT)</u>	<u>ROOMS</u>	<u>FOUNDATION</u>
Main: 1,250	Bedrooms: 3	Basement: Full
Upper: 650	Full Baths: 2	Width: 26'
		Length: 48'

Highlands, NJ  
Monmouth County

**“Our house is so great - our friends must think Greg makes a million dollars!”**

*[See more details on the Testimonial Page.](#)*

**The Wells: RBA Homes custom modular home construction in the news.**



**First Floor**

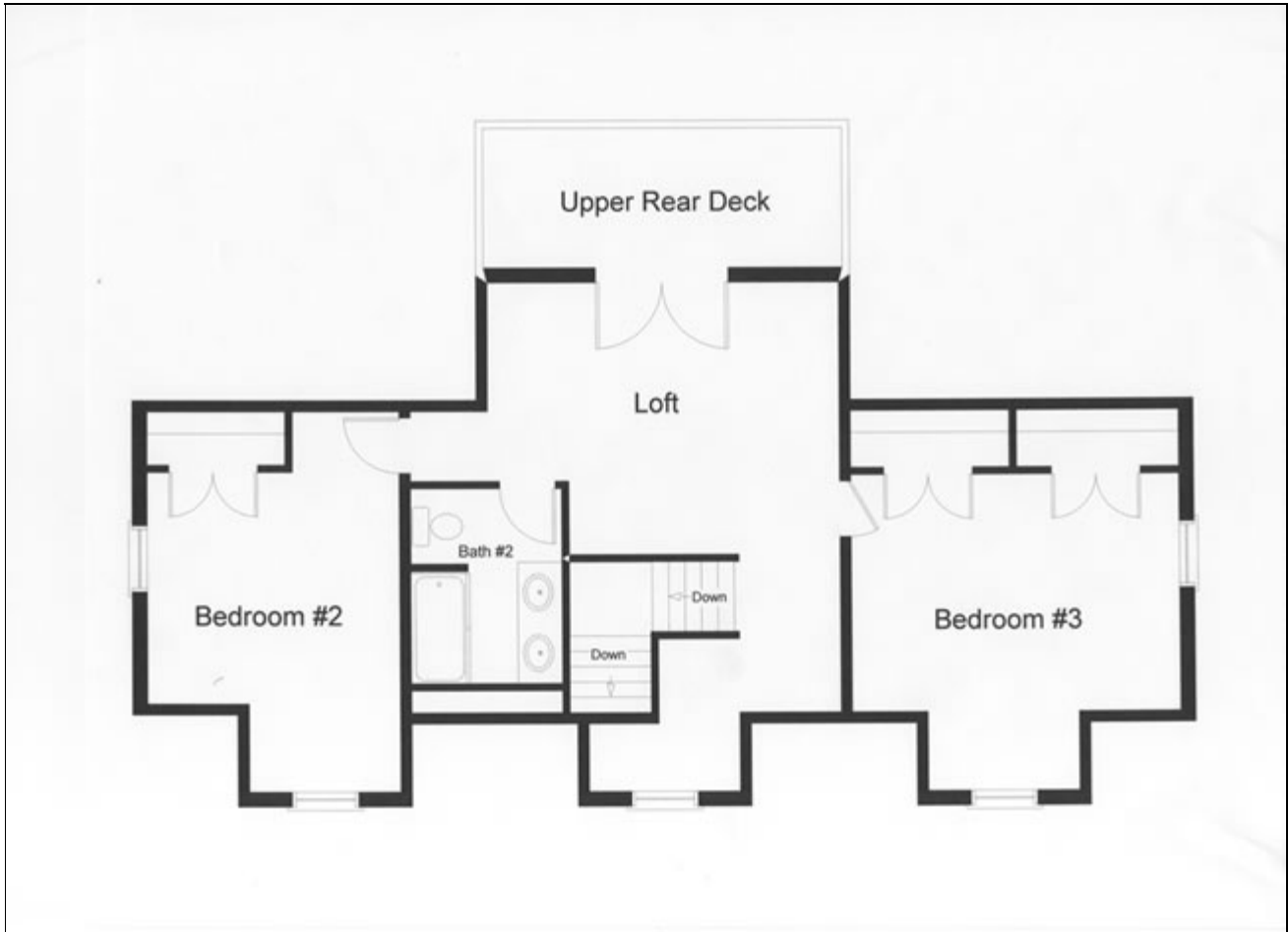


Approximately 1,900 sq. ft. — Two Story

# THE WELLS

<u>LIVING AREA (SQ FT)</u>	<u>ROOMS</u>	<u>FOUNDATION</u>
Main: 1,250	Bedrooms: 3	Basement: Full
Upper: 650	Full Baths: 2	Width: 26'
		Length: 48'

Highlands, NJ  
Monmouth County



**Second Floor**



## *Cape Floor Plans* *Modular Home Floor Plans*

RBA Homes  
732.747.3800 • 252 Broad Street • Red Bank, NJ 07701  
[www.rbahomes.com](http://www.rbahomes.com)

